

Girl-Led Action on Climate Change

ADAPTATION GUIDE (Global South)



Food and Agriculture
Organization of the
United Nations



WORLD ASSOCIATION
OF GIRL GUIDES
AND GIRL SCOUTS

Adaptation Guide

It's great that you're interested in adapting the Girl-Led Action on Climate Change (GLACC) Programme for your Member Organisation. GLACC was originally piloted with four of our Member Organisations in Africa Region in 2021 and since then has expanded with country-specific versions created by WAGGGS for Member Organisations across Sub-Saharan Africa, Latin America and the Caribbean and the Asia-Pacific. Now an expanded Global South Version of the programme is available for any of our Member Organisations to download and use.

This programme was designed and co-created with young women from the Global South, as much of the youth-focused climate actions resources – even though marked as generic or 'global' – were designed for or by young people living in the Global North.

If you are from a Member Organisation in the Global North, this programme is unlikely to suit your context or be relevant for the issues and challenges facing girls and young women in your country. Please get in touch if you are interested in a Global North version of this programme.

This adaptation guide highlights the country specific activities of the pack and gives you either a:

- **Adaptation recommended:** [ADD RELEVANT LOGO] This is not essential but is recommended so that the activity is context specific. Your participants can complete the activity as it stands in the activity pack, but are not able to make real-world connections to this and their own lives.
- **Adaptation needed:** [ADD RELEVANT LOGO] This is essential, you should not deliver it activity in its current form and should complete the adaptation steps described.

Before you adapt this programme, please note that:

The Girl Led Action on Climate Change (GLACC) curriculum is the property of the World Association of Girl Guides and Girl Scouts (WAGGGS). Once the adaptation process is completed, Member Organisations should send the drafts of their adaptation to waggs@waggs.org for support and sign off.

The content of this curriculum should not be copied or altered without permission from WAGGGS.

For more information about the programme please contact waggs@waggs.org

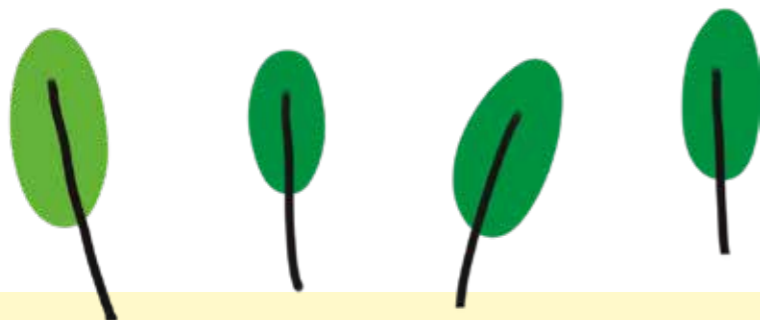
Leaders Guide

SECTION: Activity title

- **Adaptation needed:**
Across the different age-specific programmes, Girl Guide/Girl Scouts will be supported to take action and contact their decision makers to urge for change. Sometimes, where appropriate, this may include local government and politicians. Having an understanding and an overview of what their local and national government looks like will enable them to do this.
- **Task:**
Create your own national government chart, to explain the branches of government, electoral process – if you have one, who is the Head of State and which departments or ministries are responsible for overseeing key areas like; the environment, education, sanitation, youth and women.
- **Download:**
Fill in item 1a and add this to the Share the Knowledge Fact Sheet.

Younger Years

There are no specific activities within this part of the programme which need to be adapted for country-specific use.



Middle Years

WHAT IS CLIMATE CHANGE? Cross the Atmosphere

- **Adaptation needed:**
Even though you can use the generic cards provided in the Global South pack adapting these cards to suit your context will help to make the activity even more relevant for the Girl Guides/Girl Scouts in your group.
- **Task:**
Review the weather cards and climate change cards and change the sentences – focus on the parts highlighted in yellow - to reflect temperature and weather events in your country. Make sure that the changes you make still match the answers shown in the activity pack.
- **Download:**
The editable card templates are item 2a. .

ANIMALS AND PLANTS: Ecosystems: Changing Seasons

- **Adaptation needed:**
You cannot use the example seasons given, without reviewing beforehand, as this may not be relevant for the Girl Guides/Girl Scouts in your group.
- **Task:**
Review the season descriptions and replace the information to reflect the order and climate of your country.
Example seasons given:
Winter: Cold weather with rain and snow
Autumn: Cool weather with heavy rainfalls
Spring: Warm weather and light rain
Summer: Hot and dry weather.
- **Download:**
No download required

Older Years

WHAT IS CLIMATE CHANGE: Climate map

- **Adaptation needed:**
Even though you can use the generic cards provided in the Global South pack adapting these cards to suit your context will help to make the activity even more relevant for the Girl Guides/Girl Scouts in your group.
- **Task:**
Review the weather cards and climate change cards and change the sentences – focus on the parts highlighted in yellow - to reflect temperature and weather events in your country. Make sure that the changes you make still match the answers shown in the activity pack.
- **Download:**
The editable card templates are item 3a..

ANIMALS AND PLANTS: Reforestation: It's all in the leaves

- **Adaptation needed:**
You cannot use the example seasons given, without reviewing beforehand, as these trees may not be relevant for the Girl Guides/Girl Scouts in your group and they will therefore not be able to complete the identification part of the activity.
- **Task:**
Find trees which are indigenous or common to your country. Fill in the table, adding the benefits of those trees and pictures of their leaves (scientific black and white pictures work best). See the example of Benin which is provided in the Older Years Programme as an example.
- **Download:**
The editable card templates are item 3b.

Template 1a.

National government system

Before you begin to advocate, you have to identify the people you need to influence: the decision-makers who have power and responsibility in relation to the issue you want to tackle.

Understanding your national and local governance system is key to identifying the right person to aim

Map out your branches of government and local ministries below, so and create copies of this fact step for participants to use Stage 3.

Branches of Government

National Government Structure

Key government departments or ministries

Template 2a.

WEATHER VS CLIMATE CARDS	
CARDS	ANSWERS
It's sunny today.	WEATHER: By looking out your window you can see what the weather is like today
The large area of thick snow covering the land in the North Pole (ice cap) is slowly melting and disappearing	CLIMATE: This is happening over a long period of times so we can only see this by studying it for years.
It will be monsoon season from June to September in India	CLIMATE: Hurricanes typically happen in that time, in that area, every year, and we can predict them far ahead in time.
It's 20°C/°F outside.	WEATHER: This is the temperature right now and where you are.
There was a flood in Nicaragua on Tuesday.	WEATHER: This was a specific weather event that took place and disappeared, but isn't a regular pattern
Winters in Lesotho are generally dry.	CLIMATE: Winter and other seasons are a collection of the weather conditions which repeat over time and have been observed for decades.
Hurricane Catarina (2004) is the only recorded South Atlantic hurricane in history.	WEATHER: This was an event that took place once in a region where normally there aren't hurricanes, so it's a weather event.
The average temperature of the Earth is around 1°C warmer since 1880.	CLIMATE: This is a temperature change in the whole world for over 140 years, and we can't just see it when we look outside the window!

Template 3a.

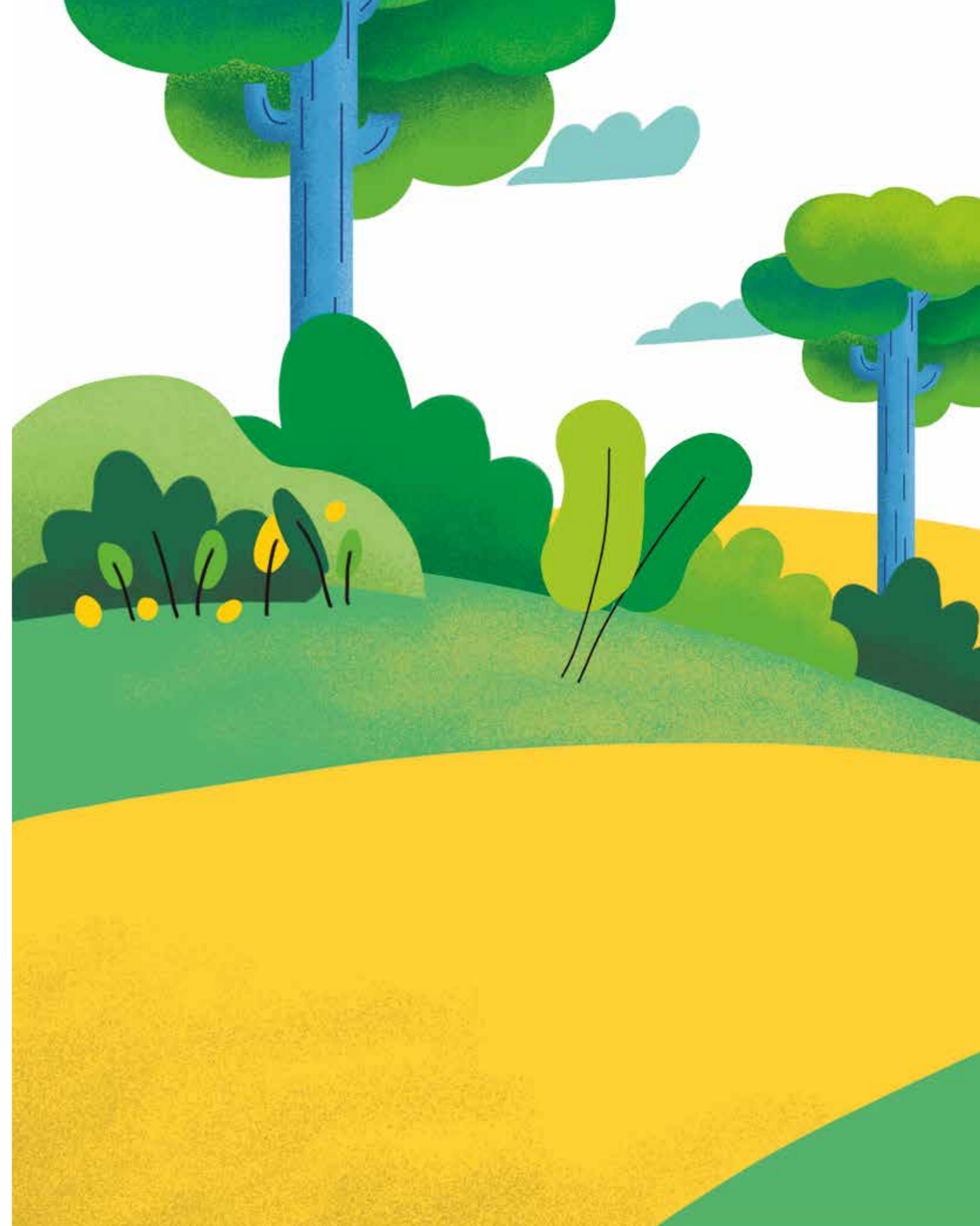
WEATHER VS CLIMATE CARDS

A	B
It's raining today.	It's 20°C/°F outside.
C	D
There was a flood in Nicaragua on Tuesday	Hurricane Catarina (2004) is the only recorded South Atlantic hurricane in history
E	F
The large area of thick snow covering the land in the North Pole (ice cap) is slowly melting and disappearing	Winters in Lesotho are generally dry.
G	H
It will be monsoon season from June to September in India.	The average temperature of the Earth is around 1°C warmer since 1880.

Template 3b.

Tree identification chart example:

Leaves Picture	Name of tree	Benefits to people



Girl-Led action on Climate Change

WORLD ASSOCIATION OF GIRL GUIDES AND GIRL SCOUTS

World Bureau, 12c Lyndhurst Road
London, NW3 5PQ United Kingdom
Telephone +44 (0)20 7794 1181

Email: waggggs@waggggs.org

Website: www.waggggs.org

Registered Charity No. 1159255 (England & Wales)

SOCIAL MEDIA



For global updates and opportunities follow
[@WAGGGSworld](https://www.instagram.com/WAGGGSworld)
on Instagram, Facebook, and Twitter.



**WORLD ASSOCIATION
OF GIRL GUIDES
AND GIRL SCOUTS**