



The Hong Kong Girl Guides Association 110th Anniversary Camp – Lead Her Pixoverse

A LETTER FROM OUR INTERNATIONAL COMMISSIONER

Dear Guiding Sisters,

On behalf of The Hong Kong Girl Guides Association (HKGGA), I would like to extend our warmest invite to you all to join our **110th Anniversary International Camp – Lead Her Pixoverse**. The camp will be held from 23 to 27 December 2026 at Runway 1331, Hong Kong.

Runway 1331 is exactly located at the retired Kai Tak International Airport of Hong Kong, which was used from 1925 until 1998. The retired airport was revitalised to a youth hostel and incubator, creating a dynamic cultural and sports landmark.

Join us as we celebrate 110 years of Girl Guiding in Hong Kong, empowering girls and young women, and making a difference in the world. It will be a time of fun, friendship and adventure! We look forward to having you with us!

The following sections will share more details about the camp. Should there be any enquiries, please feel free to contact us at 110A_Camp@hkgga.org.hk. We look forward to meeting you all in December!

Yours in guiding,



Anna Torres (Ms.)
HKGGA International Commissioner



WHAT IS “LEAD HER PIXOVERSE”?

Themed “Lead Her Pixoverse”, the HKGGA 110th Anniversary International Camp (110A Camp) offers activities infused with the concept of the **limitless metaverse**. Participants will **challenge themselves to explore endless possibilities**. Get ready to navigate diverse futures confidently while engaging in cultural, adventurous, and spiritual activities, with retro games, pioneering, and more!

Camp Keywords and Core Values...

Technology

Experience and understand new technologies and tools, and apply them during problem solving.

Breakthrough

Breakthrough self-imposed limits and constantly challenge ourselves.

Leadership

Learn and practice the six WAGGGS Leadership Mindsets through WAGGGS-inspired programmes.

WHO CAN JOIN?

We are expecting **~1000 participants** from...

- **WAGGGS Member Organisations:** Girl Guides/ Girl Scouts & Leaders
- **HKGGA:** Girl Guides & Leaders
- **Hong Kong Youth Uniformed Groups:** Members & Leaders
- **Youth Organisations from Chinese Mainland:** Youths & Leaders

Suggested MO Contingent combination:

- **1** Leader-in-Charge (aged >21)
- **1** Young Leader (aged 18-29)
- **8** Girl Guides/Girl Scouts (aged 10-23)

Remarks:

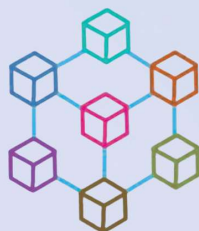
There is no limit to the number of participants per MO. However, there must be **1 adult leader (aged 18 and above) for every 8 underage participants (aged 10-17)** due to safeguarding reasons. Groups without enough leaders cannot be accepted.

CAMP PROGRAMME & ACTIVITIES

	Morning	Afternoon	Night
23 Dec 2026 (Wed)	-	Arrivals	Opening Ceremony
24 Dec 2026 (Thu)	(1) In-Camp Challenge ; (2) Camp Programme ; (3) Off-site Activities		International Night
25 Dec 2026 (Fri)	(1) Open Day Ceremony & Open Day (2) In-Camp Challenge ; (3) Camp Programme ; (4) Off-Site Activities		Christmas Night & Camplight Celebrations
26 Dec 2026 (Sat)	(1) In-Camp Challenge ; (2) Camp Programme ; (3) Off-Site Activities		Sub-Camp Party
27 Dec 2026 (Sun)	Closing Ceremony	Departures	-

In-Camp Challenge

During the Camp, all girls will be swept into a virtual space in Hong Kong - the "Pixoverse". Earn "Pixels" (points) by completing tasks across the "Realms" in the campsite!



LOADING...

The Hong Kong Girl Guides Association
110th Anniversary Camp - Lead Her Pixoverse

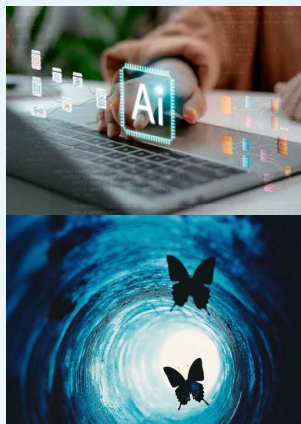
Camp Programme

Enjoy a diverse range of experiences, from cultural immersion, technology to spiritual reflections.

Intangible Cultural Heritage



STEM & Innovation Activities



WAGGGS Programmes & Experiential Simulations



Mental Wellbeing & Wellness



And more...

Off-site Activities

Venture beyond the campsite to enjoy immersive local excursions alongside a variety of high-energy, dynamic activities.

Local Historical & Ecological Tours



Adventure Activities



Sports Activities



And more...

REGISTRATION & PAYMENT

To complete your registration, you need to:

- 1 Fill in the **Contingent Registration Form**.
- 2 Complete payment in **Hong Kong Dollars** via **bank transfer**. Include your MO name to help us identify your payment. Bank transfer details have been included in the Contingent Registration Form.
- 3 Once payment is complete, send the following documents to our email (110A_Camp@hkग्ga.org.hk) latest by **12 June 2026**:
 - Contingent Registration Form;
 - Bank transfer record.
- 4 A confirmation email will be sent upon payment confirmation.

CAMP FEE FOR INTERNATIONAL PARTICIPANTS:

PACKAGE 1: CAMP ONLY
US\$490

PACKAGE 2: CAMP + TOUR
US\$640

Both packages are inclusive of:

- Basic room amenities
- All programme, souvenirs, food & accommodation at the Camp
- All transportation costs to and from the campsite

Not inclusive of:

- Airfare to and from Hong Kong
- Travel insurance
- Personal gears

Additional programmes in Package 2:

- A 2-day-1-night stay at a HKGGA centre; **or** stay with a host family
- A 1-day post-camp local tour around Hong Kong, exploring history & ecology within **Frontier Closed Areas (special approval by the local government)**. More details will be shared later.

Remarks:

Package 2 is exclusive to international participants. The arrangement of host family is subject to availability.

VISA & TRAVEL



Check if you need a visa or travel authorisation to enter Hong Kong. Requirements vary by country. You can find out more about the Visa requirements for your country at the Hong Kong Immigrations Department website [here](#).

If you need any documents to enter Hong Kong, we suggest you start your application process as soon as possible.



Temperature & Climate:

December is widely considered one of the best times to visit Hong Kong. Expect comfortable temperatures between 15°C and 20°C with low humidity, and up to 25°C during warmer days.

Clothing:

We suggest packing “onion-styled” layered clothing, including light sweaters and a windbreaker to handle chilly air-conditioned interiors and occasional evening sea breezes.

Footwear & Gear:

Hong Kong is a walking city. Bring comfortable sneakers or shoes.

CONTACT US

If you have any questions regarding registration or the camp, please do not hesitate to contact us at via email (110A_Camp@hkgga.org.hk).

We look forward to seeing you at the “Pixoverse”!

LIVING AT RUNWAY 1331: WHAT TO EXPECT

Imagine sleeping on an airport runway...

Located at the tip of the historic Kai Tak Runway, Runway 1331 is a unique revitalisation project in Hong Kong that has transformed the retired Kai Tak International Airport into a vibrant, youth-focused community hub, offering a blend of modern living and creative energy.

Runway 1331 is now a "Youth Incubator", which includes **common areas** for **artistic exchange**, **co-working spaces**, and **outdoor activity zones**. Guests can enjoy a quiet, spacious environment compared to the typical density of downtown Hong Kong, with the Kai Tak Cruise Terminal Park and Victoria Harbour just a short stroll away.



FREQUENTLY ASKED QUESTIONS

When is the application deadline?

Please submit **both the Contingent Registration Form** and **bank transfer record** by **12 June 2026**. Registration cannot be confirmed until payment is received.

How do I complete the payment?

You may transfer the Camp Fee to HKGGA's bank account as stated in the Contingent Registration Form. Please note that:

- Payment should be made in Hong Kong Dollars;
- Please include your MO name in the transfer record;
- More details are available in the Contingent Registration Form.

Can dietary restrictions be accommodated?

Yes. Please specify any dietary requirements for your MO in the Contingent Registration Form.

Why are birth dates and email addresses required during registration?

This data is essential for the 110A Camp activities. Please rest assured that all information is stored securely and used exclusively for camp-related purposes.

How do I register for Post-Camp Tours?

These tours are exclusive to MOs opting for Camp Package 2. Indicate your package choice on the Contingent Registration Form, and the 110A Camp team will contact eligible MOs with further details.

Are male leaders and participants allowed?

Male unit leaders are welcome but will be assigned shared rooms with other male leaders (potentially different MOs). Meanwhile, all participants must be Girl Guides/ Girl Scouts.

Where can I send further enquiries to?

You may contact us via email (110A_Camp@hkgsa.org.hk).